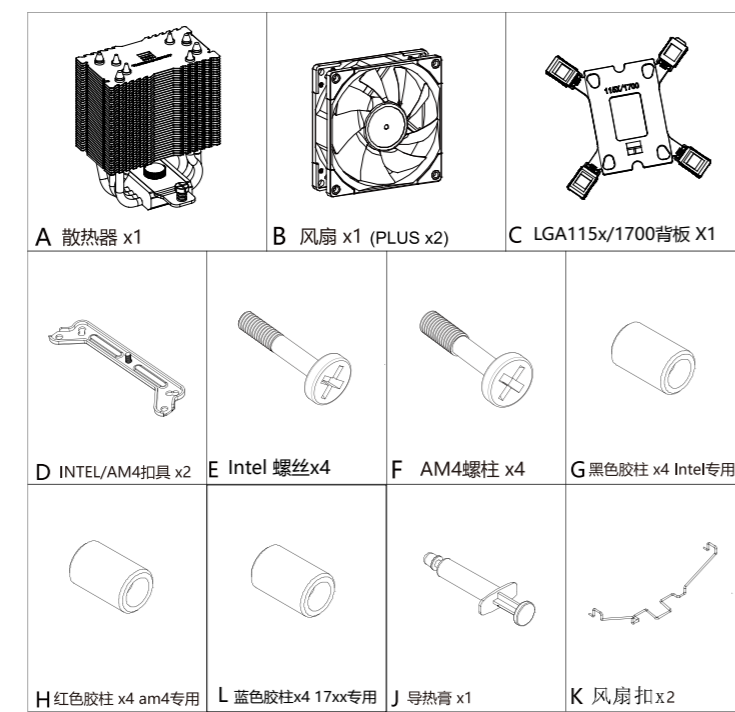
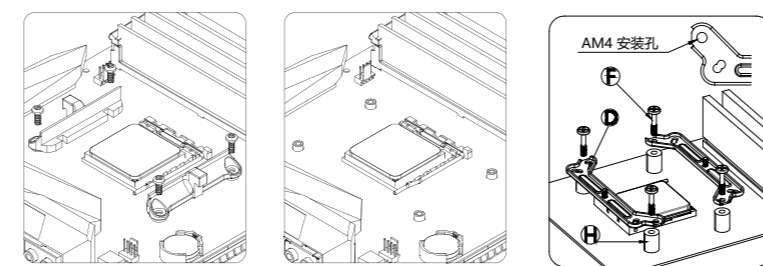



安装说明
 Assassin X 90 SE系列
www.thermalright.com

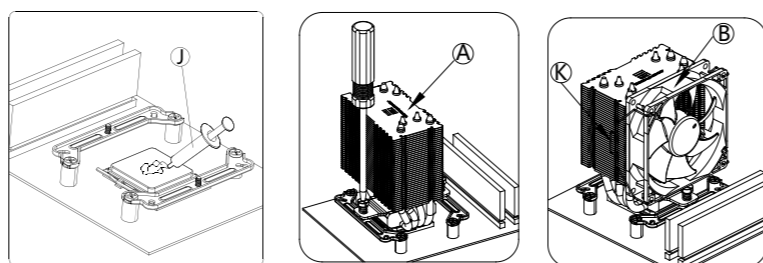
配件清单



AMD AM4/AM5

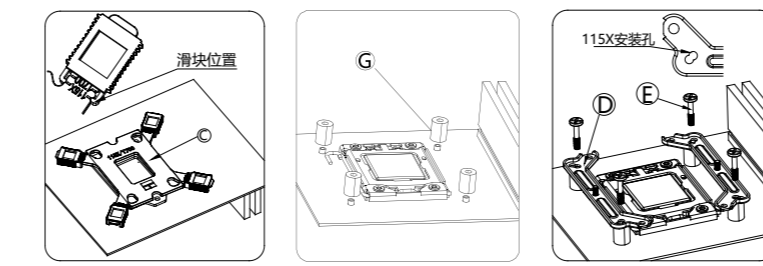


移除AMD原装塑胶支架, 保留背板; 使用AM4螺丝将AMD支架固定到背板

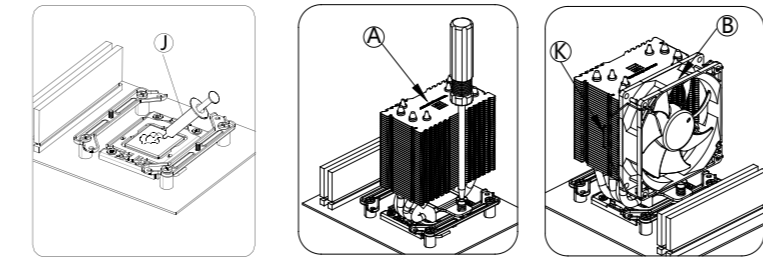


涂好导热膏, 然后先锁好散热器, 再固定风扇

INTEL LGA115X/1200

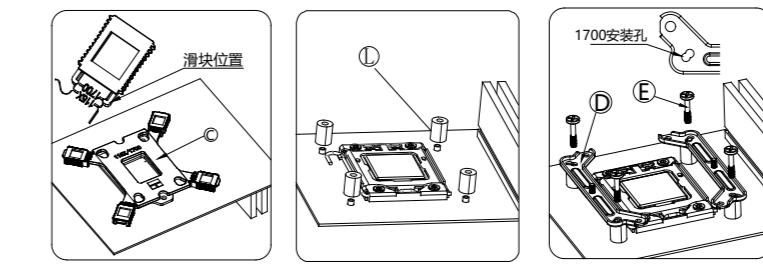


将LGA115X/1700背板放置在主板背面, 然后从正面放置胶柱. 支架再用螺丝固定住INTEL支架.

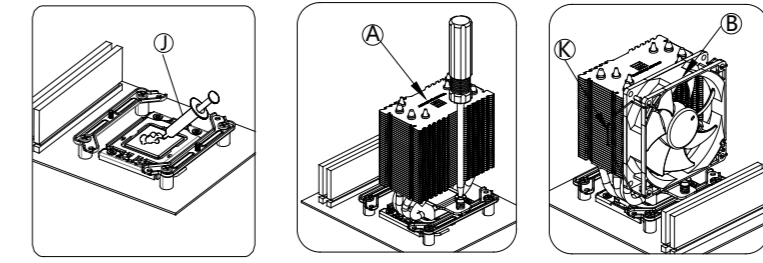


涂好导热膏, 然后先锁好散热器, 再固定风扇

INTEL LGA1700

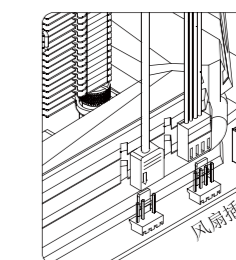


将LGA115X/1700背板放置在主板背面, 然后从正面放置胶柱. 支架再用螺丝固定住INTEL支架.

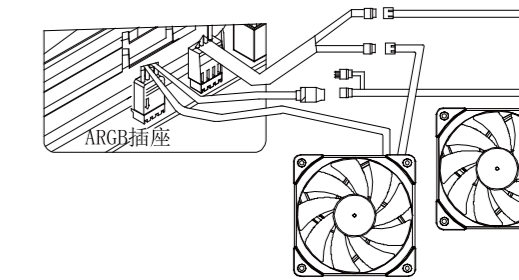


涂好导热膏, 然后先锁好散热器, 再固定风扇


风扇接线



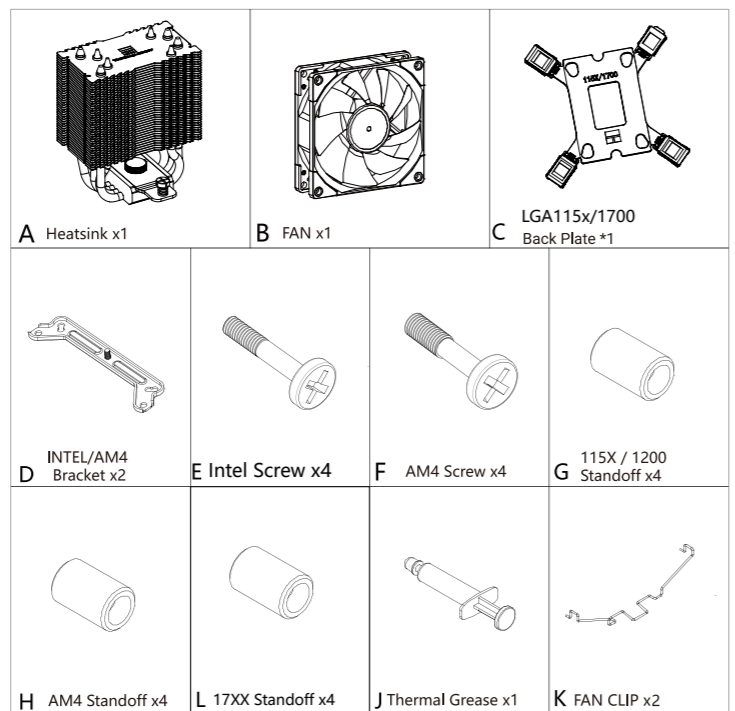
将风扇 4针PWM接头插入主板CPU_FAN 插座, 如果使用双风扇, 请使用Y型转接线。



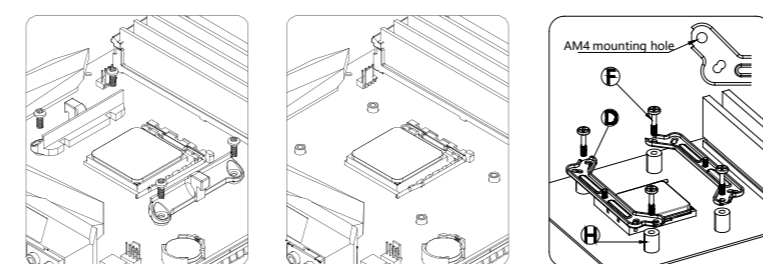
如果风扇有ARGB灯效, 请将ARGB 3针 (5V) 插入主板对应 ARGB灯效插座或者控制器, 多风扇之间可串联同步。


INSTALLATION GUIDE
 Assassin X 90 SE Series
www.thermalright.com

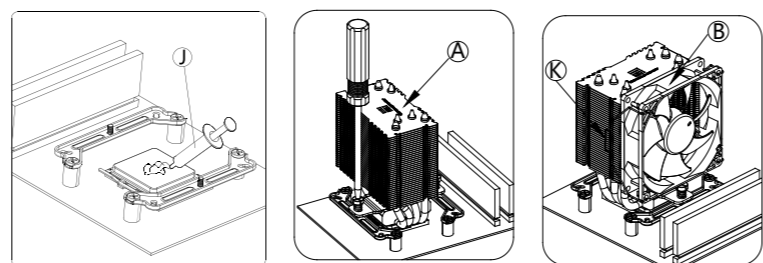
parts list



AMD AM4/AM5

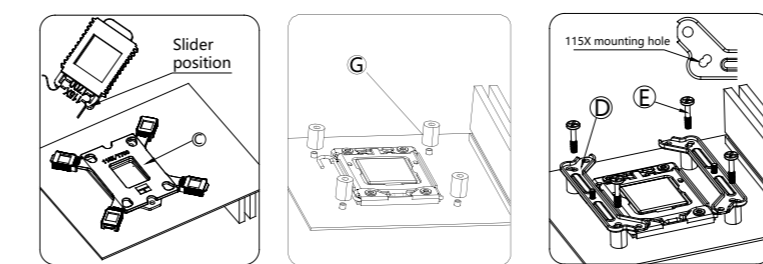


REMOVE AMD AM4 plastic brackets, KEEP the back plate, install AM4 metal brackets with AM4 screws and AM4 plastic standoffs

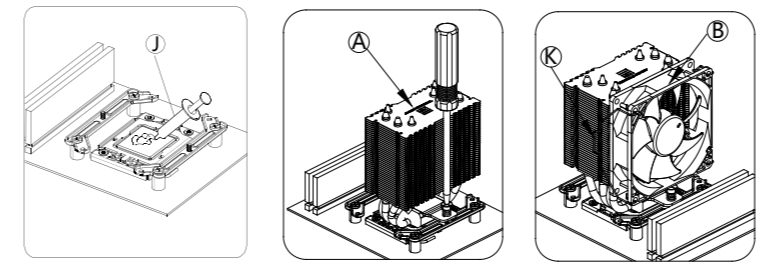


Apply thermal grease on CPU, install the heatsink with a screw driver, and install fans on heatsink with fan clips

INTEL LGA115X/1200

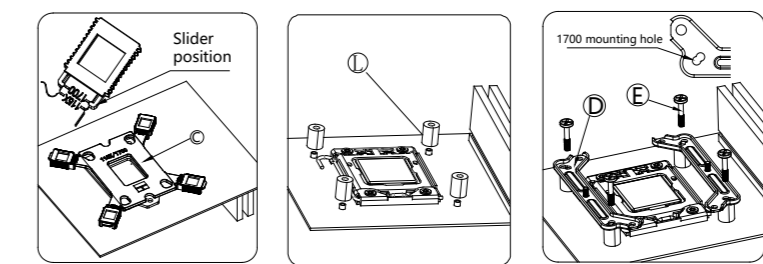


Install the LGA115X/1700 back plate from the back of motherboard, then place plastic standoffs from front side of motherboard, install LGA115X/1200 metal brackets with screws

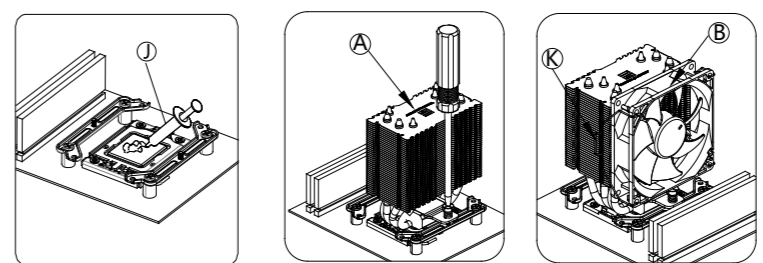


Apply thermal grease on CPU, install the heatsink with a screw driver, and install fans on heatsink with fan clips

INTEL LGA1700

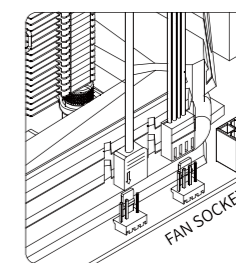


Install the LGA115X/1700 back plate from the back of motherboard, then place plastic standoffs from front side of motherboard, install LGA1700 metal brackets with screws

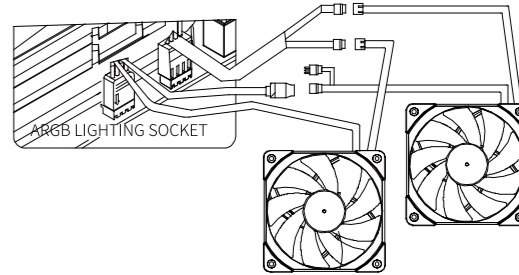


Apply thermal grease on CPU, install the heatsink with a screw driver, and install fans on heatsink with fan clips

Fan Wiring



Insert 4-pin PWM fan header in CPU_FAN socket on motherboard, use Y-cable to sync fan speed for dual fan setup.



For Fans with ARGB lighting, To control the ARGB lighting, connect ARGB lighting header (3-pin +5V) to motherboard ARGB lighting socket or ARGB lighting controller, lighting effects can be sync by connecting fan lighting headers with each other