

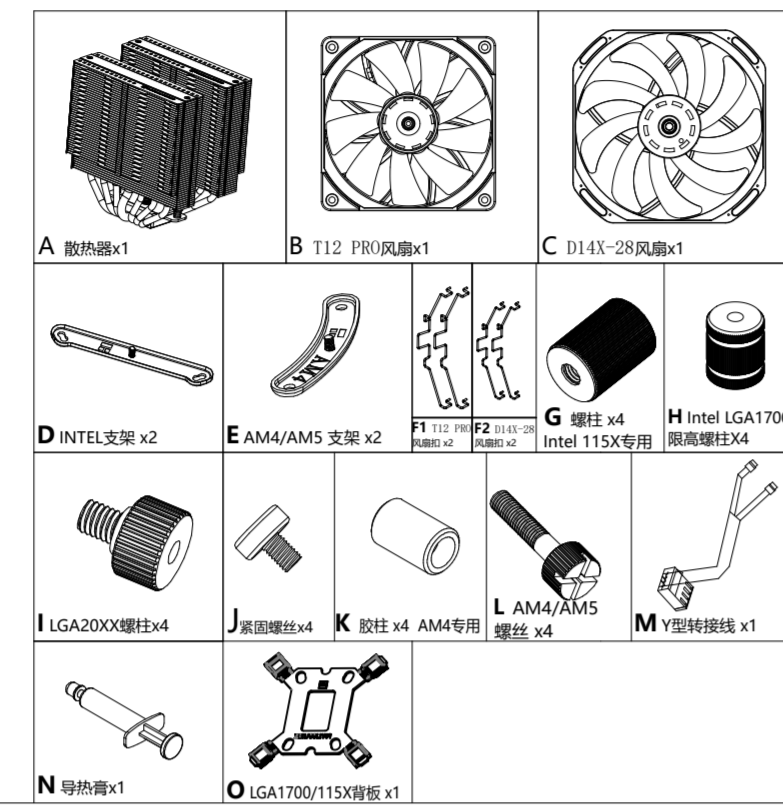


安装说明

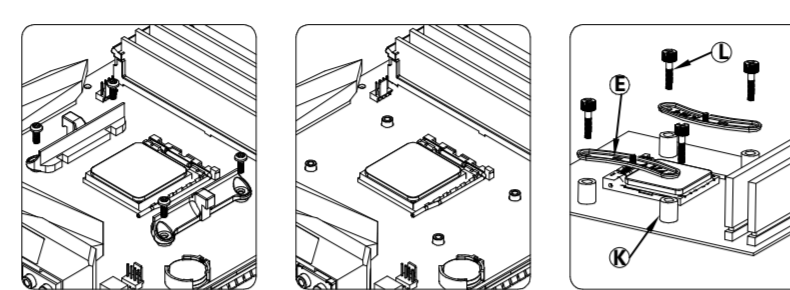
TR-Frost Vortex 140 SE 系列

www.thermalright.com

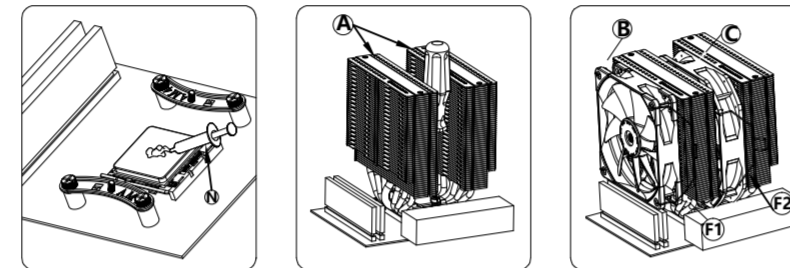
配件清单



AMD AM4/AM5

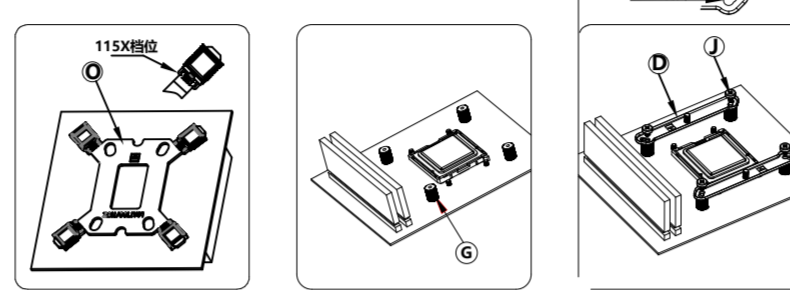


移除AMD原装塑料支架，保留背板，放置 AM4/AM5 胶柱，使用 AM4/AM5 螺丝将支架固定到主板。

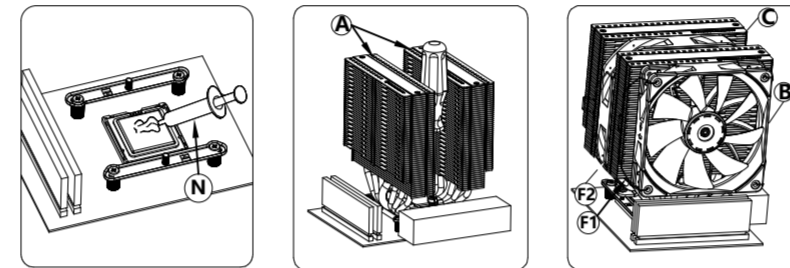


涂好导热膏，然后用螺丝刀锁好主体，再用对应的风扇线扣固定风扇

INTEL LGA115X/1200

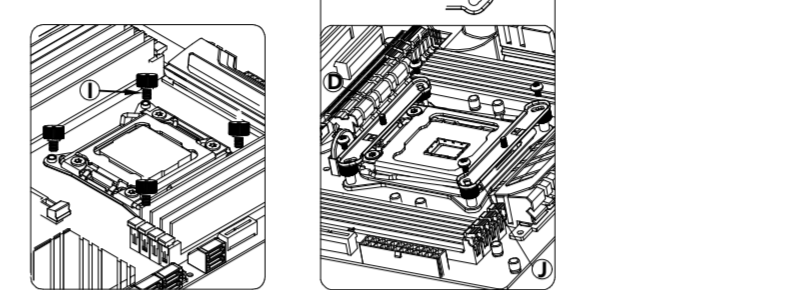


将背板推到LGA115X卡位，对应主板孔位穿过主板，然后从正面扭紧 LGA115X 螺柱，放置Intel支架再用螺丝固定住。

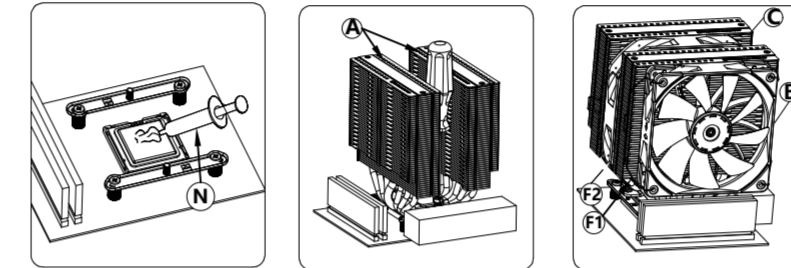


涂好导热膏，然后用螺丝刀锁好主体，再用对应的风扇线扣固定风扇

INTEL LGA20XX

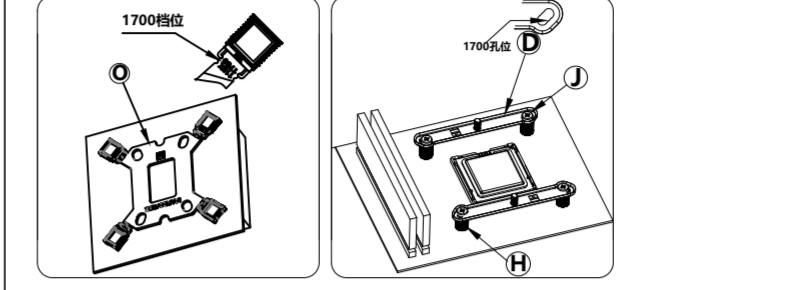


将LGA20XX螺柱拧到主板，然后放置支架，再用螺帽固定住INTEL支架。

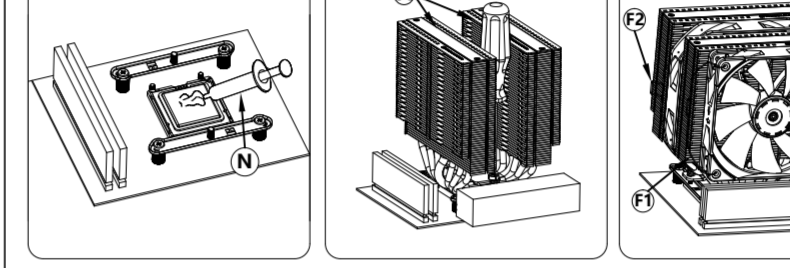


涂好导热膏，然后用螺丝刀锁好主体，再用对应的风扇线扣固定风扇

INTEL LGA1700

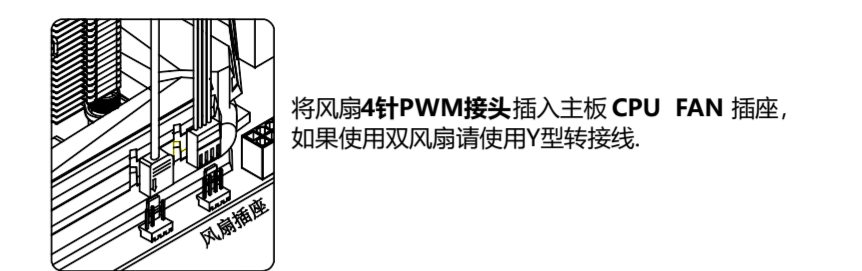


将背板推到LGA1700卡位，对应主板孔位穿过主板，然后从正面扭紧 LGA1700螺柱，放置Intel支架再用螺丝固定住。

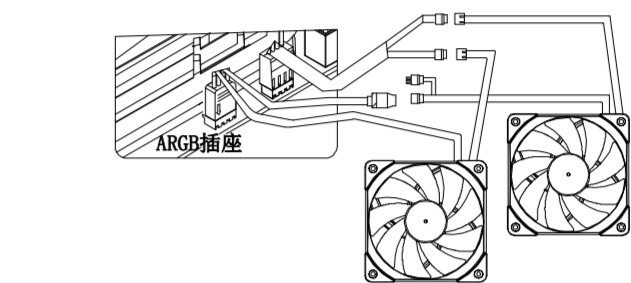


涂好导热膏，然后用螺丝刀锁好主体，再用对应的风扇线扣固定风扇

风扇接线



将风扇4针PWM接头插入主板 CPU FAN 插座，如果使用双风扇请使用Y型转接线。



如果风扇有ARGB灯效，请将ARGB3针（5V）插入主板对应的ARGB灯效插座或者控制器，多风扇之间可串联同步。

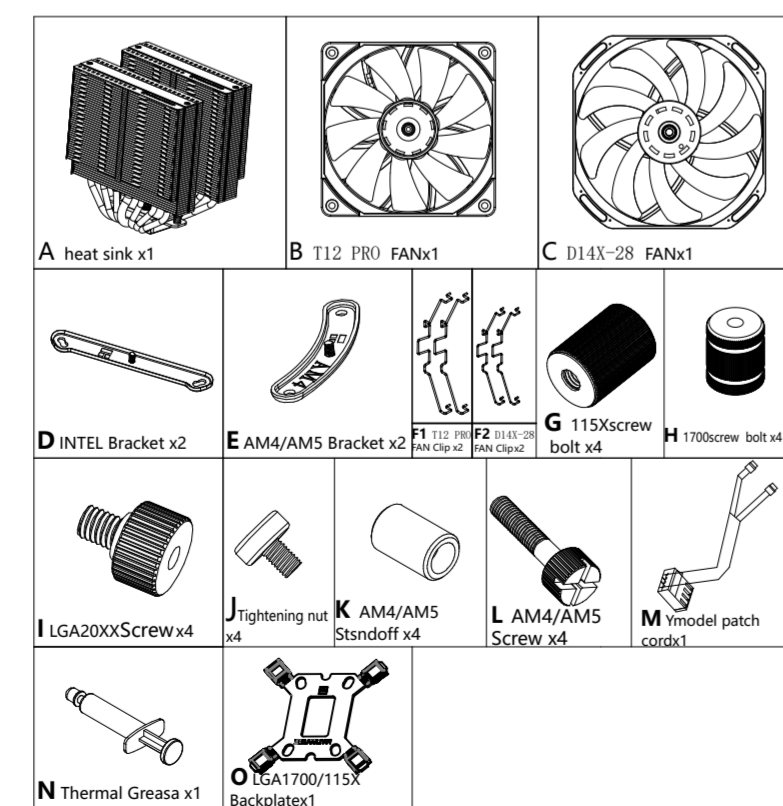


INSTALLATION GUIDE

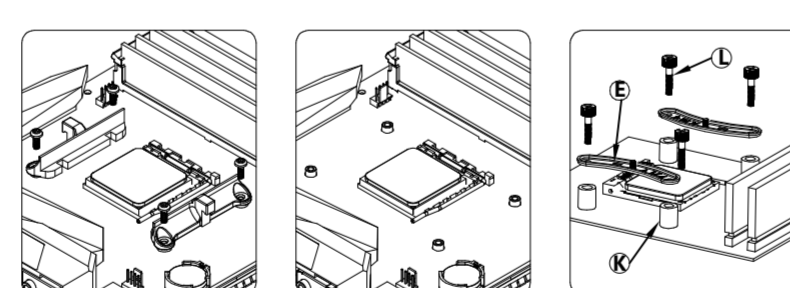
TR-Frost Vortex 140 SE series

www.thermalright.com

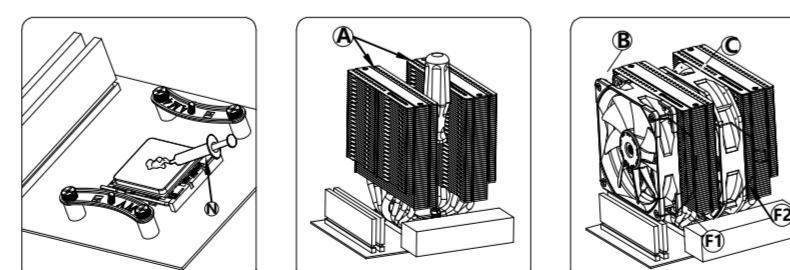
PARTS LIST



AMD AM4/AM5

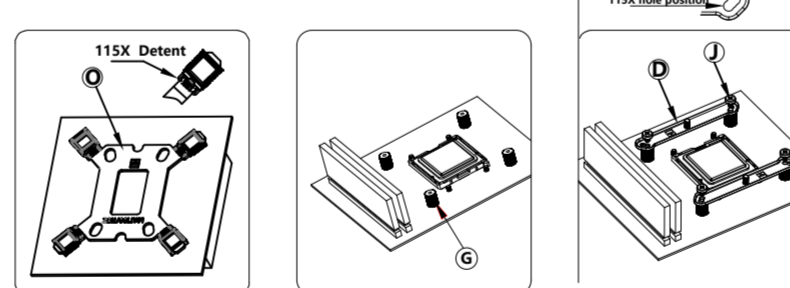


Remove the AMD original plastic support, keep the back plate, and lock it to the original motherboard base plate with AM4/AM5 rubber column

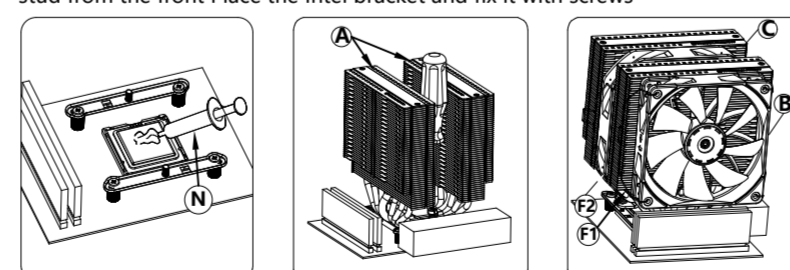


Apply thermal paste, lock the body with a screwdriver, and secure the fan using the corresponding fan cable tie

INTEL LGA115X/1200

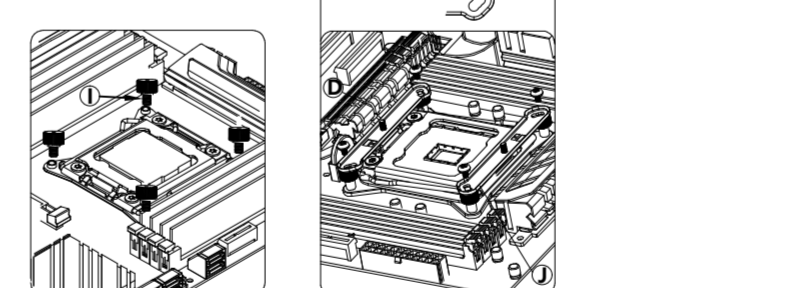


Push the backplane to the LGA115x detent, and the corresponding hole position of the main board passes through the main board, and then tighten the LGA115x stud from the front Place the Intel bracket and fix it with screws

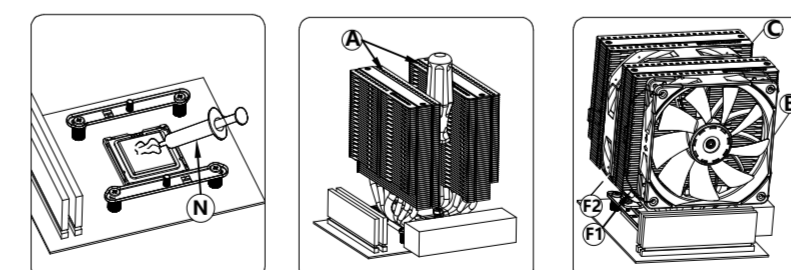


Apply thermal paste, lock the body with a screwdriver, and secure the fan using the corresponding fan cable tie

INTEL LGA20XX

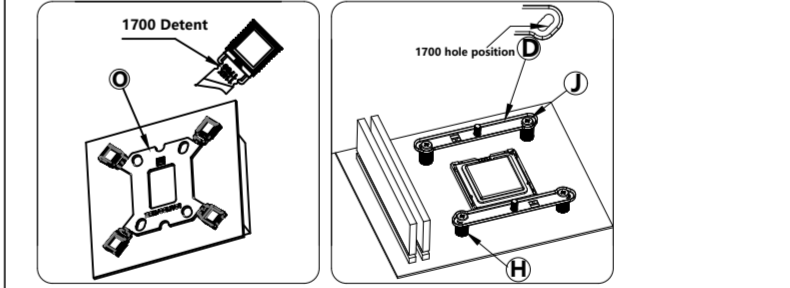


Thread in the LGA20XX screws;put on the brackets and then tightening with nuts.

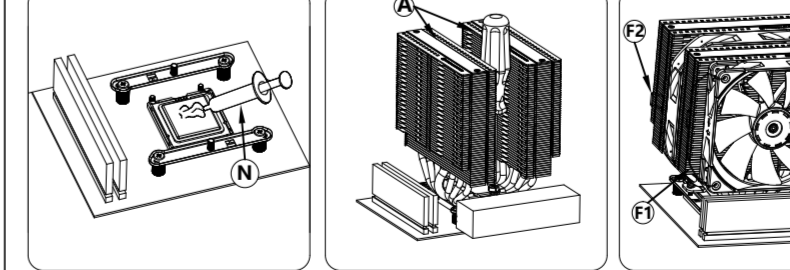


Apply thermal paste, lock the body with a screwdriver, and secure the fan using the corresponding fan cable tie

INTEL LGA1700



Push the backplane to the LGA1700 detent, and the corresponding hole position of the main board passes through the main board, and then tighten the LGA1700 stud from the front Place the Intel bracket and fix it with screws

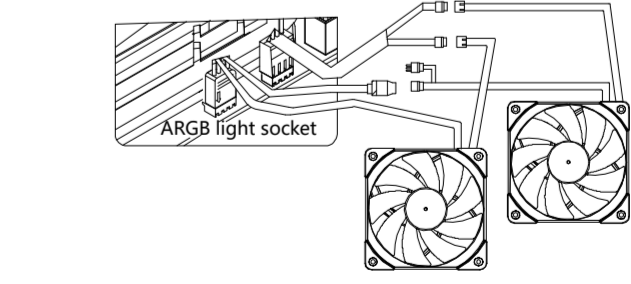


Apply thermal paste, lock the body with a screwdriver, and secure the fan using the corresponding fan cable tie

Fan wiring



Insert 4-pin PWM fan header in CPU FAN socket on motherboard, use Y-cable to sync fan speed for dual fan setup.



For Fans with ARGB lighting, To control the ARGB lighting connect ARGB lighting header(3-pin +5V) to motherboard ARGB lighting socket or ARGB lighting controller, lighting effects can be sync by connecting fan lighting headers with each other.